

ATG | BETTER VALUE.
SMARTER CHOICE.

OTR TYRE RANGE

 **ALLIANCE**
ENGINEERED TO KEEP YOU AHEAD





BETTER VALUE.
SMARTER CHOICE.



ABOUT ALLIANCE

ALLIANCE TIRE GROUP

Alliance Tire Group (ATG) specializes in the development, manufacturing and sale of Off-Highway Tyres. One of the fastest growing Off-Highway Tyre companies, ATG has a wide range of products for Agricultural, Forestry, Industrial and OTR tyres. ATG owns three world-renowned brands – Alliance, Galaxy and Primex.

ALLIANCE

Established in Israel in 1950, Alliance has a range of over 1000 specialized items, each product is carefully engineered keeping the latest technology in mind. Alliance helps to maximize profits with its focus on pioneering innovation and technology. It offers the widest range in sizes and patterns so that you have the perfect, most efficient tyre for your needs.

Alliance is the market leader in Row Crop and a pioneer in Flotation tyres. Alliance also boasts of a very comprehensive lineup of tyres for tractors, sprayers and spreaders. It offers the widest range in terms of pricing, sizes and patterns, which are available for varied applications which include Agriculture, Industrial / OTR and Forestry machines. Alliance range of radial tyres is popular with leading OEMs and the after-market.

Alliance OTR tyres are available in radial and diagonal constructions for machines such as rigid dump truck, articulated dump truck, loaders, dozers, graders etc. Also special line of tyres are available for port & container yard machines and equipment used in underground mining.

RADIAL EARTHMOVER

Page 3



600 E-2/L-2/G-2



Page 4



650 E-3/L-3/G-3



Page 5



655 E-3/L-3/G-3



Page 6



690 E-3/L-3/G-3



Page 7



300 R-4



Page 9



210 E-3



Page 12



225 R-4



Page 15



302 E-2/G-2/L-2



BIAS EARTHMOVER

Page 17



306 G-2/L-2



Page 20



307 G-2/L-2



Page 21



308 G-2/L-2



Page 23



310 E-3/L-3/G-3



Page 24



318 E-3/L-3



Page 27



326 E-2/L-2/G-2



PORT

Page 31



309 E-3



Page 32



315 E-4



Page 33



318 E-3



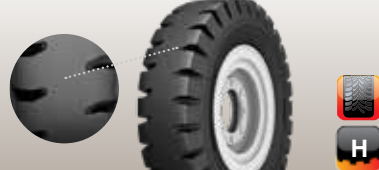
Page 34



505 L-4



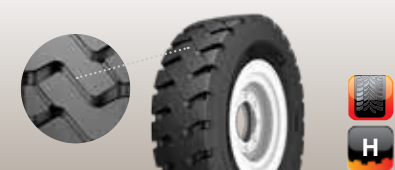
Page 35



609 IND-4

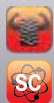


Page 35



610 IND-4





314 L-5S

RADIAL EARTH MOVER

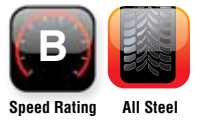


E-2/G-2/L-2



600

Alliance 600 EM Loader Dozer is a modern wide base, all steel radial tyre for all types of earthmoving equipments. Its unique tread design and sophisticated construction ensure superior performance coupled with smoother rides.



600 LOADER DOZER

Size	Rim	Unloaded dimension		Loaded Static Radius	Rolling Circum	load index Speed Sym	Infl. press	Off-the road				Hard Improved Surfaces				
		SW	OD					Infl. press	Recommended load, kg (lbs)			Infl. press	Recommended load, kg (lbs)			
									Speed, km/h (mph)				Speed, km/h (mph)			
									bar psi	Static	5 3		10 6	25 16	bar psi	Static
15.5R25 L2	12.00/1.3	391	1274	576	3760	*	4.5	9280	6550	5800	4930	5.4	10440	8410	7830	7250
		15.4	50.2	22.7	148	169A2	65	20440	14430	12780	10860	78	23000	18520	17250	15970
17.5R25 L2	14.00/1.5	445	1345	594	3920	*	4.5	11360	8020	7100	6040	5.4	12780	10300	9590	8880
		17.5	53	23.4	154.3	176A2	65	25020	17670	15640	13300	78	28150	22690	21120	19560

600 TRANSPORT & GRADER

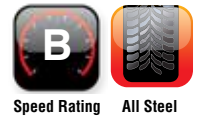
Size	Rim	Unloaded dimension		Loaded Static Radius	Rolling Circum	load index Speed Sym	Infl. press	Recommend load, kg (lbs)								
		SW	OD					Speed, km/h (mph)								
								15 9	20 12	25 16	30 19	35 22	40 25	45 28	50 31	55 34
15.5R25 E2 / G2	12.00/1.3	391	1274	591	3830	*	3.5	3980	3910	3830	3760	3690	3660	3620	3550	3440
		15.4	50	23.3	150.8	152B	51	8770	8610	8440	8280	8130	8060	7970	7820	7580
17.5R25 E2 / G2	14.00/1.5	445	1345	614	4000		3.5	4620	4540	4460	4370	4290	4250	4210	4125	4000
		17.5	53	24.2	157.5	157B	51	10180	10000	9820	9630	9450	9360	9270	9090	8810

E-3/G-3/L-3



650

Alliance 650 All Steel Radial Loader Dozer tyre has well proven tread pattern that enables its use for a wide range of applications on different kinds of mobile construction equipments. It's all steel construction ensures higher productivity with lower downtime.



650 LOADER DOZER

Size	Rim	Unloaded dimension		Loaded Static Radius	Rolling Circum	load index Speed Sym	Off-the road					Hard Improved Surfaces				
		SW mm in	OD mm in				Infl. press bar psi	Recommended load, kg (lbs)				Infl. press bar psi	Recommended load, kg (lbs)			
								Speed, km/h (mph)					Speed, km/h (mph)			
								Static	5 3	10 6	25 16		Static	5 3	10 6	25 16
15.5R25	12.00/1.3	395	1277	563	3840	**	4.5	5040	4950	4860	4770	4680	4640	4590	4500	4370
L-3/E3		15.6	50.3	22.2	151.2	176A2	65	11100	10900	10700	10510	10310	10220	10110	9910	9630
20.5R25	17.00/2.0	543	1486	688	446	**	5.75	18400	13000	11500	9780	6.9	20700	16680	15530	14380
L-3/E3		21.4	58.5	27.1	175.6	193A2	83	40530	28630	25330	21540	100	45590	36740	34210	31670
23.5R25	19.50/2.5	605	1611	732	4780	**	5.75	23200	16390	14500	12330	6.9	26100	21030	19580	18130
L-3/E3		23.8	63.4	28.8	188.2	201A2	83	51100	36100	31940	27160	100	57490	46320	43130	39930
26.5R25	22.00/3.0	695	1738	779	5110	**	5.75	29600	20910	18500	15730	6.9	33300	26830	24980	23130
L-3/E3		27.4	68.4	30.7	201.2	209A2	83	65200	46060	40750	34650	100	73350	59100	55020	50950

650 TRANSPORT AND GRADER

Size	Rim	Unloaded dimension		Loaded Static Radius	Rolling Circum	Load Index Speed Symb.	Infl. press bar psi	Recommend load, kg (lbs)								
		SW mm in	OD mm in					Speed, km/h (mph)								
								15 9	20 12	25 16	30 19	35 22	40 25	45 28	50 31	55 34
15.5R25	12.00/1.3	395	1277	563	3840	**	3.5	3900	3830	3760	3690	3620	3580	3550	3480	3380
E3/G3		15.6	50.3	22.2	151.2	176A2	51	8590	8440	8280	8130	7970	7890	7820	7670	7440
20.5R25	17.00/2.0	538	1495	708	4550	**	4.5	8180	8030	7880	7740	7590	7520	7450	7300	7080
E3/G3		21.2	58.9	27.9	179.1	177B	65	18020	17690	17360	17050	16720	16560	16410	16080	15590
23.5R25	19.50/2.5	605	1611	732	4780	**	4.5	10360	10180	9990	9810	9620	9530	9440	9250	8970
E3/G3		23.8	63.4	28.8	188.2	185B	65	22820	22420	22000	21610	21190	20990	20790	20370	19760
26.5R25	22.00/3.0	680	1745	778	5110	*	3.5	10080	9900	9720	9540	9360	9270	9180	9000	8730
						184B	51	22200	21810	21410	21010	20620	20420	20220	19820	19230
E3/G3	26.8	68.7	30.6	201.2	**	4.5	12880	12650	12420	12190	11960	11850	11730	11500	11160	
						193B	65	28370	27860	27360	26850	26340	26100	25840	25330	24580



655

Alliance 655 Multiuse Special Winter All Steel OTR Radial Loader Dozer tyre represents an excellent all seasons tyre provided with specific, wide, non directional tread pattern which enables good grip on every surface and good self cleaning even in muddy terrains. Its strong steel stress resistance casing reduces punctures. The tyre's special rubber compound, aggressive blocks and sips enable exceptional traction, maneuvering ability and braking on ice & snow as well as on sand and loose terrains. Low motion resistance of the tyre influence significantly decreases vehicle fuel consumption, and tread rubber compound along with strong all-steel carcass enables longevity.



655 LOADER DOZER

Size	Rim	Unloaded dimension		Loaded Static Radius	Rolling Circum	load index Speed Sym	Infl. press	Off-the road				Hard Improved Surfaces				
		SW	OD					Recommended load, kg (lbs)				Infl. press	Recommended load, kg (lbs)			
								Speed, km/h (mph)					Speed, km/h (mph)			
								mm in	mm in	mm in	mm in		bar psi	Static	5 3	10 6
15.5R25	12.00/1.3	400	1274	564	3714	*	4.5	9280	6550	5800	4930	4.5	10440	8410	7830	7250
		15.7	50.2	22.2	146.2	169A2	65	20440	14430	12780	10860	65	23000	18520	17250	15970
17.5R25	14.00/1.5	440	1349	614	4046	176A2	4.5	11360	8020	7100	6040	4.5	12780	10300	9590	8880
		17.3	53.1	24.2	159.3		65	25020	17670	15640	13300	65	28150	22690	21120	19560
20.5R25	17.00/2	522	1496	662	4360	*	4.5	15200	10740	9500	8080	4.5	17100	13780	12830	11880
		20.6	58.9	26.1	171.7	186A2	65	33480	23660	20930	17800	65	37670	30350	28260	26170

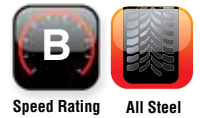
655 TRANSPORT AND GRADER

Size	Rim	Unloaded dimension		Loaded Static Radius	Rolling Circum	Load Index Speed Symb.	Infl. press	Recommend load, kg (lbs)									
		SW	OD					Speed, km/h (mph)									
								Speed, km/h (mph)									
								mm in	mm in	mm in	mm in	bar psi	15 9	20 12	25 16	30 19	35 22
14.00R24	10.00VA 9.00/1.5 8.00TG	385	1364	623	4069	153A8	3.75	3650	3650	3650	3650	3650	3650	3650	3500	3320	3140
		15.2	53.7	24.5	160.2		54	8040	8040	8040	8040	8040	8040	7710	7390	6920	
		15.5R25	12.00/1.3	400	1274		579	3782	152B	3	3270	3210	3150	3090	3030	3000	2850
15.7	50.2	22.8		148.9	44	7200	7070	6940		6810	6670	6610	6280	6010	-		
3.5	3980	3910		3830	3760	3690	3660	3620		3550	3480						
17.5R25	14.00/1.5	440	1349	621	4069	157B	3	3980	3910	3830	3760	3690	3650	3470	3320	-	
		17.3	53.1	24.4	160.2		44	8770	8610	8440	8280	8130	8040	7640	7310	-	
		3.5	4620	4540	4460		4370	4290	4250	4210	4125	4040					
20.5R25	17.00/2	522	1496	688	4486	168B	3	5040	4950	4860	4760	4670	4625	4390	4210	-	
		20.6	58.9	27.1	176.6		44	11100	10900	10700	10480	10290	10190	9670	9270	-	
		3.5	6270	6160	6050		5940	5820	5770	5710	5600	5490					
							51	13810	13570	13330	13080	12820	12710	12580	11810	12090	



690

Alliance 690 All Steel Radial Loader Dozer is a modern wide-base, all-steel radial tyre for all types of earthmoving equipments. Its unique tread design and sophisticated construction enable superior performance and high mileage coupled with smoother rides. The all steel construction ensures low downtime.



690 LOADER DOZER

Size	Rim	Unloaded dimension		Loaded Static Radius	Rolling Circum	load index Speed Sym	Off-the road Infl. press	Recommended load, kg (lbs)				Hard Improved Surfaces				
		SW	OD					Speed, km/h (mph)				Infl. press	Recommended load, kg (lbs)			
								Speed, km/h (mph)					bar psi	Speed, km/h (mph)		
		mm in	mm in	mm in	mm in		bar psi	Static	5 3	10 6	25 16	bar psi		Static	5 3	10 6
17.5R25		477	1345	619	4020	**	5.75	13600	9610	8500	7230	6.9	15300	12330	11480	10630
L-3/E3	14.00/1.5	17.6	53	24.4	158.3	182A2	83	29960	21170	18720	15930	100	33700	27160	25290	23410
All Steel																

690 TRANSPORT & GRADER

Size	Rim	Unloaded dimension		Loaded Static Radius	Rolling Circum	Load Index Speed Sym.	Infl. press	Recommend load, kg (lbs)								
		SW	OD					Speed, km/h (mph)								
								15 9	20 12	25 16	30 19	35 22	40 25	45 28	50 31	55 34
		mm in	mm in	mm in	mm in		bar psi									
17.5R25		477	1345	619	4020	**	4.5	6100	6000	5890	5780	5670	5610	5560	5450	5290
E3/G3	14.00/1.5	17.6	53	24.4	158.3	167B	65	13440	13220	12970	12730	12490	12360	12250	12000	11650

R-4



BACKHOE



ARTICULATED
DUMP TRUCK



300 MPT

Alliance 300 is a modern, all steel radial, wide-base tyre for multipurpose trucks on highway, off-the-road, field and construction services. Its unique tread design provides high mileage and high performance.



Speed Rating



On & Off Road



All Steel

Size	Rim	Unloaded dimension		Loaded Static Radius	Rolling Circum	PR	Load Index	Infl. press	Recommend load, kg (lbs)								
		SW	OD						Speed, km/h (mph)								
		mm in	mm in						15 9	20 12	30 19	40 25	50 31	60 37	70 44	80 50	90 56
12.5R20	11	330 13	1040 40.9	475 18.7	3090 121.7	12PR	132G	3.5 51	3300 7270	3000 6610	2500 5510	2300 5070	2240 4930	2200 4850	2140 4710	2080 4580	2000 4410

BIAS EARTHMOVER



E-3



ARTICULATED
DUMP TRUCK



DUMP TRUCK



210 SUPER TRANSPORT LUG

Alliance 210 Super Transport Lug tyre is engineered to carry heavy loads on all types of surfaces such as sand, rock, mud, snow, etc. Its special tread design provides traction and high mileage. The cap and base tread construction coupled with a strong nylon carcass ensure smooth running and long tyre life.



Size	Rim	Unloaded dimension		Loaded Static Radius mm in	Rolling Circm.	PR L/LS	Infl. press bar psi	Recommend load, kg (lbs)									
		SW mm in	OD mm in					Speed, km/h (mph)									
								15 9	20 12	30 19	40 25	50 31	60 37	70 44	80 50		
11.00-20 EM	8 8.00V 8.0V5° 8.5 8.50V 8.5V5°	293 11.5	1104 43.5	516 20.3	3355 132.1	D	5.2	3890	3540	2950	2710	2640	2600	2480	2360		
							12	75	8570	7800	6500	5970	5810	5730	5460	5200	
							143F										
							S	5.9	4500	4090	3410	3130	3050	3000	2860	2725	
							12	86	9910	9010	7510	6890	6720	6610	6300	6000	
							143F										
	D	6.2	4370	3980	3310	3050	2970	2920	2780	2650							
	14	90	9630	8770	7290	6720	6540	6430	6120	5840							
	146F																
	S	6.9	4950	4500	3750	3450	3360	3300	3150	3000							
	14	100	10900	9910	8260	7600	7400	7270	6940	6610							
	146F																
D	7.2	4790	4350	3630	3340	3250	3190	3050	2900								
16	104	10550	9580	8000	7360	7160	7030	6720	6390								
150F																	
S	7.9	5530	5030	4190	3850	3750	3690	3520	3350								
16	115	12180	11080	9230	8480	8260	8130	7750	7380								
150F																	

Size	Rim	Unloaded dimension		Loaded Static Radius	Rolling Circm.	PR LI/LS	Infl. press	Recommend load, kg (lbs)								
		SW	OD					Speed, km/h (mph)								
		mm in	mm in	mm in				bar psi	15 9	20 12	30 19	40 25	50 31	60 37	70 44	80 50
12.00-20 EM	8.5 8.50V 8.5V5° 9 9.00V 9.0V5°	315 12.4	1145 45.1	534 21	3355 132.1	D	5.5	4620	4200	3500	3220	3140	3080	2940	2800	
						14	80	10180	9250	7710	7090	6920	6780	6480	6170	
						149F										
						S	6.2	5360	4880	4060	3740	3640	3580	3410	3250	
						14	90	11810	10750	8940	8240	8020	7890	7510	7160	
						149F										
		D	6.6	5200	4730	3940	3620	3530	3470	3310	3150					
		16	96	11450	10420	8680	7970	7780	7640	7290	6940					
		152F														
		S	7.2	5860	5330	4440	4080	3980	3910	3730	3550					
		16	104	12910	11740	9780	8990	8770	8610	8220	7820					
		152F														
		D	7.2	5530	5030	4190	3850	3750	3690	3520	3350					
		18	104	12180	11080	9230	8480	8260	8130	7750	7380					
		154F														
		S	7.9	6190	5630	4690	4310	4200	4130	3940	3750					
		18	115	13630	12400	10330	9490	9250	9100	8680	8260					
		154F														
D	7.6	5810	5280	4400	4050	3940	3870	3700	3520							
20	110	12800	11630	9690	8920	8680	8520	8150	7750							
156F																
S	8.3	6600	6000	5000	4600	4480	4400	4200	4000							
20	120	14540	13220	11010	10130	9870	9690	9250	8810							
156F																
D	5.2	4500	4090	3410	3130	3050	3000	2860	2725							
12	75	9910	9010	7510	6890	6720	6610	6300	6000							
147F																
S	5.9	5070	4610	3840	3540	3440	3380	3230	3075							
12	86	11170	10150	8460	7800	7580	7440	7110	6770							
147F																
D	6.2	4950	4500	3750	3450	3360	3300	3150	3000							
14	90	10900	9910	8260	7600	7400	7270	6940	6610							
151F																
S	6.9	5690	5180	4310	3970	3860	3800	3620	3450							
14	100	12530	11410	9490	8740	8500	8370	7970	7600							
151F																
D	7.2	5360	4880	4060	3740	3640	3580	3410	3250							
16	104	11810	10750	8940	8240	8020	7890	7510	7160							
154F																
S	7.9	6190	5630	4690	4310	4200	4130	3940	3750							
16	115	13630	12400	10330	9490	9250	9100	8680	8260							
154F																

Size	Rim	Unloaded dimension		Loaded Static Radius	Rolling Circm.	PR LI/LS	Infl. press	Recommend load, kg (lbs)								
		SW	OD					Speed, km/h (mph)								
		mm in	mm in	mm in	15 9			20 12	30 19	40 25	50 31	60 37	70 44	80 50		
12.00-24 EM	8.5 8.50V 8.5V5° 9 9.00V 9.0V5°	315 12.4	1247 49.1	585 23	3355 132.1	D	5.5	5200	4730	3940	3620	3530	3470	3310	3150	
						14	80	11450	10420	8680	7970	7780	7640	7290	6940	
						153F										
						S	6.2	6020	5480	4560	4200	4090	4020	3830	3650	
						14	90	13260	12070	10040	9250	9010	8850	8440	8040	
						153F										
						D	6.6	5860	5330	4440	4080	3980	3910	3730	3550	
						16	96	12910	11740	9780	8990	8770	8610	8220	7820	
						156F										
						S	7.2	6600	6000	5000	4600	4480	4400	4200	4000	
						16	104	14540	13220	11010	10130	9870	9690	9250	8810	
						156F										
						D	7.2	6190	5630	4690	4310	4200	4130	3940	3750	
						18	104	13630	12400	10330	9490	9250	9100	8680	8260	
						158F										
						S	7.9	7010	6380	5310	4890	4760	4680	4460	4250	
						18	115	15440	14050	11700	10770	10480	10310	9820	9360	
						158F										
						D	7.9	6600	6000	5000	4600	4480	4400	4200	4000	
						20	115	14540	13220	11010	10130	9870	9690	9250	8810	
						160F										
						S	8.6	7430	6750	5630	5180	5040	4950	4730	4500	
						20	125	16370	14870	12400	11410	11100	10900	10420	9910	
						160F										
D	9.2	7340	6680	5560	5120	4980	4900	4670	4450							
24	133	16170	14710	12250	11280	10970	10790	10290	9800							
164F																
S	10.3	8250	7500	6250	5750	5600	5500	5250	5000							
24	149	18170	16520	13770	12670	12330	12110	11560	11010							
164F																



225 MPT

Alliance 225 design is a wide based tyre for multipurpose trucks used on highways, off road and agricultural applications. This tread pattern is designed for self-cleaning as well as for smooth on road driving. The diagonal lug design of the tyre provides best traction in all services, terrain and weather conditions. This also improves resistance to side slip. The wide based design provides high flotation properties and permits low inflation pressure. For better mileage on road/free rolling applications, it is recommended to mount the tyre in opposite direction than usual.



Size	Rim	Unloaded dimension		Loaded Static Radius	Rolling Circum	PR	Load Index	Infl. press	Recommend load, kg (lbs)								
		SW	OD						Speed, km/h (mph)								
		mm in	mm in						15 9	20 12	30 19	40 25	50 31	60 37	70 44	80 50	90 56
12.5-20MPT	11	325	1040	475	3090	10	131F	3	3220	2930	2440	2240	2180	2150	2090	1950	-
		12.8	40.9	18.7	121.7			44	7090	6450	5370	4930	4800	4740	4600	4300	-
12.5R20	11	330 13	1040 40.9	475 18.7	3090 121.7	12	132G	3.5	3300	3000	2500	2300	2240	2200	2140	2140	2000
								51	7270	6610	5510	5070	4930	4850	4710	4710	4410
						14	136G	4	3700	3360	2800	2580	2510	2460	2400	2400	2240
								58	8150	7400	6170	5680	5530	5420	5290	5290	4930
						16	139G	4.5	4010	3650	3040	2790	2720	2670	2600	2600	2430
								65	8830	8040	6700	6150	5990	5880	5730	5730	5350
405/70-20MPT	13.SDC 13	407 16	1076 42.4	491 19.3	3200 126	10	141B	2.5	3860	3480	2850	2600	2525	-	-	-	-
								36	8500	7670	6280	5730	5560	-	-	-	-
						12	145B	3	4440	4000	3280	2990	2900	-	-	-	-
								44	9780	8810	7220	6590	6390	-	-	-	-
						16	152B	4	5430	4900	4010	3660	3550	-	-	-	-
								58	11960	10790	8830	8060	7820	-	-	-	-
						20	155B	5	5930	5350	4380	3990	3875	-	-	-	-
								73	13060	11780	9650	8790	8540	-	-	-	-

Size	Rim	Unloaded dimension		Loaded Static Radius	Rolling Circum	PR Load Index	Infl. press	Recommend load, kg (lbs)								
		SW	OD					Speed, km/h (mph)								
		mm in	mm in					mm in	mm in	Static	5 3	10 6	20 12	25 16	30 19	40 25
8.25-20ML	6.5 6.50T 7 7.00T 7.0T5°	234	985	467	3000	10	5.2	3820	2660	2230	2150	2110	2100	2020	1940	1900
						130B	75	8410	5860	4910	4740	4650	4630	4450	4270	4190
						12	6.2	4260	2960	2480	2400	2350	2330	2250	2160	2120
						134B	90	9380	6520	5460	5290	5180	5130	4960	4760	4670
						14	7.2	4750	3300	2770	2680	2630	2600	2510	2410	2360
9.00-20ML	7 7.00T 7.0T5° 7.5 7.5V 7.5T5°	256	1035	491	3150	10	5.2	4490	3120	2620	2530	2490	2460	2370	2280	2240
						136B	75	9890	6870	5770	5570	5480	5420	5220	5020	4930
						14	7.2	5630	3920	3290	3170	3120	3090	2970	2860	2800
						144B	104	12400	8630	7250	6980	6870	6810	6540	6300	6170
						12	5.2	5180	3600	3020	2920	2870	2840	2740	2630	2575
10.00-20ML ML-2	7.5 7.50V 8 8.00V 8.0V5°	275	1065	505	3240	141B	75	11410	7930	6650	6430	6320	6260	6040	5790	5670
						14	6.6	5830	4060	3400	3290	3230	3200	3080	2960	2900
						145B	96	12840	8940	7490	7250	7110	7050	6780	6520	6390
						16	7.5	6300	4410	3685	-	3495	-	3340	-	3150
						148B	100	13880	9723	8124	-	7705	-	7304	-	6945
11.00-20ML ML-2	8 8.00V 8.0V5° 8.5 8.50V 8.5V5°	291	1095	517	3320	12	5.5	5830	4060	3400	3290	3230	3200	3080	2960	2900
						145B	80	12840	8940	7490	7250	7110	7050	6780	6520	6390
						14	6.6	6740	4690	3930	3800	3730	3690	3560	3420	3350
						150B	96	14850	10330	8660	8370	8220	8130	7840	7530	7380
						16	7.2	7330	5100	4280	4130	4050	4020	3870	3720	3650
15-22.5ML ML-2	11.75 12.25	388	1095	508	3290	153B	104	16150	11230	9430	9100	8920	8850	8520	8190	8040
						12	5	6740	4690	3930	3800	3730	3690	3560	3420	3350
						150B	73	14850	10330	8660	8370	8220	8130	7840	7530	7380
						16	7.25	8550	5950	4990	4820	4730	4690	4510	4340	4250
						158B	105	18830	13110	10990	10620	10420	10330	9930	9560	9360
22	9.6	10050	6990	5870	5660	5560	5510	5300	5100	5000						
164B	139	22140	15400	12930	12470	12250	12140	11670	11230	11010						

225 MPT

Size	Rim	Unloaded dimension		Loaded Static Radius	Rolling Circum	PR	Load Index	Infl. press	Recommend load, kg (lbs)								
		SW	OD						Speed, km/h (mph)								
		mm in	mm in						mm in	mm in	Speed Symbol	bar psi	15 9	20 12	30 19	40 25	50 31
12.5-20	11	325	1040	475	3090	6	127F	2.5	2890	2630	2190	2010	1960	1930	1870	1750	-
								36	6370	5790	4820	4430	4320	4250	4120	3850	-
						8	131F	3	3220	2930	2440	2240	2180	2150	2090	1950	-
								44	7090	6450	5370	4930	4800	4740	4600	4300	-
						10	133F	3.5	3400	3090	2580	2370	2310	2270	2200	2060	-
405/70-20	13.SDC 13	407	1076	491	3200	10	141B	2.5	3860	3480	2850	2600	2525	-	-	-	-
								36	8500	7670	6280	5730	5560	-	-	-	-
						12	145B	3	4440	4000	3280	2990	2900	-	-	-	-
								44	9780	8810	7220	6590	6390	-	-	-	-
						14	149B	3.5	4970	4490	3670	3350	3250	-	-	-	-
								51	10950	9890	8080	7380	7160	-	-	-	-
						16	152B	4	5430	4900	4010	3660	3550	-	-	-	-
		58	11960	10790	8830	8060	7820	-	-	-	-						
20	155B	5	5930	5350	4380	3990	3875	-	-	-	-						
		73	13060	11780	9650	8790	8540	-	-	-	-						

NON HIGHWAY APPLICATION

Size	Rim	Unloaded dimension		Loaded Static Radius	Rolling Circum	PR	Free/Drive Wheel	Infl. press.	Free rolling								
		SW	OD						Recommend load, kg (lbs)								
		mm in	mm in	mm in	mm in		Speed, km/h (mph)										
							Load index speed Sym	bar psi	10 6	20 12	30 19	40 25	50 31	60 37	65 40	70 44	
12.5-20	11	325 12.8	1040 40.9	475 18.7	3090 121.7	8	2.5	4100	3280	2690	2400	2200	2090	2010	1970	1950	-
						131B	36	9030	7220	5930	5290	4850	4600	4430	4340	4300	-
						10	3	4580	3660	3010	2680	2460	2330	2250	2200	2180	-
						135B	44	10090	8060	6630	5900	5420	5130	4960	4850	4800	-

E-2/L-2/G-2



DOZER



GRADER



DUMP TRUCK



ARTICULATED
DUMP TRUCK



302

Alliance 302 Industrial Implement tyre is a heavy duty implement tyre for industrial application and for all types of hard services. It has good self-cleaning ability, as well as high traction, which makes this tread design suitable for all kinds of off road services. Its strong nylon carcass ensures full power transmission as well as good resistance to mechanical tyre failures.

302 LOADER DOZER



Speed Rating



Special
Compound



Traction



Off Road

Size	Rim	Unloaded dimension		Loaded Static Radius	Rolling Circum	PR load index	Off-the road							Hard Improved Surfaces			
		SW	OD				Infl. press	Recommended load, kg (lbs)				Infl. press	Recommended load, kg (lbs)				
								Speed, km/h (mph)					Speed, km/h (mph)				
								bar psi	Static	5 3	10 6		25 16	bar psi	Static	5 3	10 6
						8	2.5	6800	4800	4250	3610	3	7650	6160	5740	5310	
						158A2	36	14980	10570	9360	7950	44	16850	13570	12640	11700	
						10	3.25	7800	5510	4875	4140	3.9	8780	7070	6580	6090	
15.5-25	12	394	1277	564	3720	163A2	47	17180	12140	10740	9120	57	19340	15570	14490	13410	
L2	12SDC	15.5	50.3	22.2	146.5	12	4	8960	6330	5600	4760	4.8	10080	8120	7560	7000	
						168A2	58	19740	13940	12330	10480	70	22200	17890	16650	15420	
						14	4.75	9840	6950	6150	5230	5.7	11070	8920	8300	7690	
						171A2	69	21670	15310	13550	11520	83	24380	19650	18280	16940	

302 IMPLEMENT

Size	Rim	Unloaded dimension		Loaded Static Radius	Rolling Circum	PR	Free/Drive Wheel	Infl. press.	Recommend load, kg (lbs)						
		SW	OD						Speed, km/h (mph)						
		mm in	mm in	mm in	mm in		Free rolling	10 6	25 16	40 25	50 31	25 16	40 25	50 31	
		mm in	mm in	mm in	mm in		Load index	bar psi	10 6	25 16	40 25	50 31	25 16	40 25	50 31
16.5/85-28	W13L W14L W15L	417	1423	626	4133	10	159A6	2.3 33	5640	4990	4375	3940	3510	3075	2770
		16.4	56	24.6	162.7		156A8		12420	10990	9640	8680	7730	6770	6100
							147A6								
							144A8								

302 TRACTOR HEAVY DUTY

Size	Rim	Unloaded dimension		Loaded Static Radius	Rolling Circum	PR, Stars Load Index Speed Symbol	Recommend load, kg (lbs)									
		SW	OD				Industrial Use					Agricultural Use				
		mm in	mm in	mm in	mm in		Infl.	Constant load	Cyclic Applic	Infl.	Road Transport	Field				
		mm in	mm in	mm in	mm in		bar psi	20 12	40 25	20 12	40 25	Bar psi	20 12	40 25	50 31	10 6
14.9-28	W13	378	1343	606	3962	12	3.1	3430	3150	3870	3150	2.7	3160	2360	2150	2530
	W12	14.9	52.9	23.9	156	148A8	45	7560	6940	8520	6940	39	6960	5200	4740	5570
16.9-28						12	2.6	3870	3550	4370	3550	2.4	3650	2725	2480	2920
	W15L	429	1410	641	4179	152A8	38	8520	7820	9630	7820	35	8040	6000	5460	6430
	W14 DW14	16.9	55.5	25.2	164.5	14	3	4220	3875	4770	3875	2.8	4020	3000	2730	3210
						155A8	44	9300	8540	10510	8540	41	8850	6610	6010	7070

302 TRANSPORT & GRADER

Size	Rim	Unloaded dimension		Loaded Static Radius	Rolling Circum	PR Load Index Speed Symb.	Infl. press.	Recommend load, kg (lbs)									
		SW	OD					Speed, km/h (mph)									
		mm in	mm in	mm in	mm in		bar psi	15 9	20 12	25 16	30 19	35 22	40 25	45 28	50 31	55 34	
		mm in	mm in	mm in	mm in		bar psi	15 9	20 12	25 16	30 19	35 22	40 25	45 28	50 31	55 34	
15.5-25 E2	12 12SDC	394	1227	564	3720	8	1.75	2880	2830	2780	2730	2680	2650	2630	2575	2500	
		15.5	50.3	22.2	146.5	141B	25	6340	6230	6120	6010	5900	5840	5790	5670	5510	
						10	2.25	3360	3300	3240	3180	3120	3090	3060	3000	2910	
						146B	33	7400	7270	7140	7000	6870	6810	6740	6610	6410	
						12	2.5	3640	3580	3510	3450	3380	3350	3320	3250	3150	
						149B	36	8020	7890	7730	7600	7440	7380	7310	7160	6940	
						14	2.75	3980	3910	3830	3760	3690	3660	3620	3550	3440	
						152B	40	8770	8610	8440	8280	8130	8060	7970	7820	7580	

G-2/L-2



GRADER



DOZER



ARTICULATED
DUMP TRUCK



DUMP TRUCK



306

Alliance 306 Super Traction Grader tyre is a tough road grader tyre developed especially to withstand rugged terrains. Its massive lugs are reinforced and connected to an extra thick center tread rubber belt. This design feature enables the tyre to be used for long lasting service in tough conditions. Nylon construction enables the tyre to overcome obstacles and ensures long tyre life.



306 LOADER GRADER

Size	Rim	Unloaded dimension		Loaded Static Radius	Rolling Circum	PR Load Index Speed Symb.	Infl. press	Recommend load, kg (lbs)								
		SW	OD					Speed, km/h (mph)								
		mm in	mm in					15 9	20 12	25 16	30 19	35 22	40 25	45 28	50 31	55 34
13.00-24TG TG G-2	8.00TG 10.00VA	333 13.1	1278 50.3	582 22.9	3790 149.2	8	1.75	2250	2200	2160	2120	2080	2060	2020	2000	-
						133A8	25	4960	4850	4760	4670	4580	4540	4450	4410	-
						10	2.25	2570	2530	2480	2430	2380	2360	2310	2290	-
						138A8	33	5660	5570	5460	5350	5240	5200	5090	5040	-
						12	2.75	2890	2840	2780	2730	2680	2650	2600	2570	-
						142A8	40	6370	6260	6120	6010	5900	5840	5730	5660	-
						14	3.25	3270	3210	3150	3090	3030	3000	2940	2910	-
						146A8	47	7200	7070	6940	6810	6670	6610	6480	6410	-
						16	4	3650	3585	3515	3450	3380	3350	3285	3250	-
						150A8	58	8045	7905	7750	7605	7450	7385	7240	7165	-
14.00-24TG TG G-2	8.00TG max14PR 10.00VA	362 14.3	1348 53.1	617 24.3	4010 157.9	12	2.5	3350	3290	3230	3170	3110	3075	3010	2980	-
						147A8	36	7380	7250	7110	6980	6850	6770	6630	6560	-
						16	3.5	3980	3910	3830	3760	3690	3650	3580	3540	-
						153A8	51	8770	8610	8440	8280	8130	8040	7890	7800	-
16.00-24TG TG G-2	10.00AV	427 16.8	1460 57.5	670 26.4	4350 171.3	12	2.25	3980	3910	3830	3760	3690	3650	3580	3540	-
						153A8	33	8770	8610	8440	8280	8130	8040	7890	7800	-
						16	3	4910	4820	4730	4640	4550	4500	4410	4370	-
						160A8	44	10810	10620	10420	10220	10020	9910	9710	9630	-
17.5-25 G-2	14* 14.00SDC	444 17.5	1348 53.1	599 23.6	3940 155.1	12	2	3160	3100	3050	2990	2930	2900	2840	2810	-
						145A8	29	6960	6830	6720	6590	6450	6390	6260	6190	-
						16	2.75	3650	3580	3520	3450	3380	3350	3280	3250	-
						150A8	40	8040	7890	7750	7600	7440	7380	7220	7160	-
						20	3.25	3980	3910	3830	3760	3690	3650	3580	3540	-
153A8	47	8770	8610	8440	8280	8130	8040	7890	7800	-						

Size	Rim	Unloaded dimension		Loaded Static Radius	Rolling Circum	PR Load Index Speed Symb.	Infl. press	Recommend load, kg (lbs)								
		SW	OD					Speed, km/h (mph)								
		mm in	mm in					15 9	20 12	25 16	30 19	35 22	40 25	45 28	50 31	55 34
20.5-25 G-2	17*	520 20.5	1492 58.7	658 25.9	4340 170.9	12	1.75	3650	3580	3520	3450	3380	3350	3280	3250	-
						150A8	25	8040	7890	7750	7600	7440	7380	7220	7160	-
						16	2.25	4360	4280	4200	4120	4040	4000	3920	3880	-
						156A8	33	9600	9430	9250	9070	8900	8810	8630	8550	-
						20	2.75	4910	4820	4730	4640	4550	4500	4410	4370	-
						160A8	40	10810	10620	10420	10220	10020	9910	9710	9630	-

306 LOADER DOZER

Size	Rim	Unloaded dimension		Loaded Static Radius	Rolling Circum	PR load index Speed Sym	Infl. press	Off-the road				Hard Improved Surfaces				
		SW	OD					Recommended load, kg (lbs)				Infl. press	Recommended load, kg (lbs)			
		mm in	mm in					Speed, km/h (mph)					Speed, km/h (mph)			
		mm in	mm in					mm in	mm in	bar psi	Static	5 3	10 6	25 16	bar psi	Static
13.00-24TG TG L-2	8.00TG max14PR 10.00VA	333 13.1	1278 50.3	582 22.9	3790 149.2	8	3	7000	4940	4375	3720	3.6	7880	6340	5910	5470
						159A2	44	15420	10880	9640	8190	52	17360	13960	13020	12050
						10	3.75	8000	5650	5000	4250	4.5	9000	7250	6750	6250
						164A2	54	17620	12440	11010	9360	65	19820	15970	14870	13770
						12	4.5	8960	6330	5600	4760	5.4	10080	8120	7560	7000
						168A2	65	19740	13940	12330	10480	78	22200	17890	16650	15420
14.00-24TG TG L-2	8.00TG max14PR 10.00VA	362 14.3	1348 53.1	617 24.3	4010 157.9	14	5.25	9600	6780	6000	5100	6.3	10800	8700	8100	7500
						170A2	76	21150	14930	13220	11230	91	23790	19160	17840	16520
						12	4.25	10080	7120	6300	5360	5.1	11340	9140	8510	7880
						172A2	62	22200	15680	13880	11810	74	24980	20130	18740	17360
16.00-24TG TG L-2	10.00VA	427 16.8	1460 57.5	670 26.4	4350 171.3	16	5.75	12000	8480	7500	6380	6.9	13500	10880	10130	9380
						178A2	83	26430	18680	16520	14050	100	29740	23960	22310	20660
						12	3.25	11360	8020	7100	6040	3.9	12780	10300	9590	8880
						176A2	47	25020	17670	15640	13300	57	28150	22690	21120	19560
17.5-25 L-2	14*	444 17.5	1348 53.1	599 23.6	3940 155.1	16	4.25	13200	9320	8250	7010	5.1	14850	11960	11140	10310
						181A2	62	29070	20530	18170	15440	74	32710	26340	24540	22710
						12	3.5	9840	6950	6150	5230	4.2	11070	8920	8300	7690
						171A2	51	21670	15310	13550	11520	61	24380	19650	18280	16940
						16	4.75	11680	8250	7300	6210	5.7	13140	10590	9860	9130
						177A2	69	25730	18170	16080	13680	83	28940	23330	21720	20110
20.5-25 L-2	17*	520 20.5	1492 58.7	658 25.9	4340 170.9	20	5.75	13200	9320	8250	7010	6.9	14850	11960	11140	10310
						181A2	83	29070	20530	18170	15440	100	32710	26340	24540	22710
						12	2.5	10720	7570	6700	5700	3	12060	9720	9050	8380
						174A2	36	23610	16670	14760	12560	44	26560	21410	19930	18460
20.5-25 L-2	17*	520 20.5	1492 58.7	658 25.9	4340 170.9	16	3.5	13200	9320	8250	7010	4.2	14850	11960	11140	10310
						181A2	51	29070	20530	18170	15440	61	32710	26340	24540	22710
						20	4.5	15200	10740	9500	8080	5.4	17100	13780	12830	11880
						186A2	65	33480	23660	20930	17800	78	37670	30350	28260	26170

306 TRANSPORT

Size	Rim	Unloaded dimension		Loaded Static Radius	Rolling Circum	PR Load Index	Infl. press	Recommend load, kg (lbs)								
		SW	OD					Speed, km/h (mph)								
		mm in	mm in					15 9	20 12	25 16	30 19	35 22	40 25	45 28	50 31	55 34
13.00-24 E-2	10.00W	350	1278	582	3790	12	3	3360	3300	3240	3180	3120	3090	3060	3000	2910
	9.00V	13.8	50.3	22.9	149.2	146B	44	7400	7270	7140	7000	6870	6810	6740	6610	6410
14.00-24NHS NHS E-2	10.00W	375 14.8	1348 53.1	617 24.3	4010 157.9	16	3.75	4480	4400	4320	4240	4160	4120	4080	4000	3880
						156B	54	9870	9690	9520	9340	9160	9070	8990	8810	8550
						20	4.75	5180	5090	5000	4900	4810	4760	4720	4625	4490
						161B	69	11410	11210	11010	10790	10590	10480	10400	10190	9890
						24	5.75	5770	5670	5560	5460	5360	5300	5250	5150	5000
						165B	83	12710	12490	12250	12030	11810	11670	11560	11340	11010
						28	6.75	6340	6230	6110	6000	5890	5830	5770	5660	5490
						168B	98	13960	13720	13460	13220	12970	12840	12710	12470	12090
17.5-25 E-2	14* 14.00SDC	444 17.5	1348 53.1	599 23.6	3940 155.1	12	2.25	4090	4020	3940	3870	3800	3760	3720	3650	3540
						153B	33	9010	8850	8680	8520	8370	8280	8190	8040	7800
						16	3	4760	4680	4590	4510	4420	4380	4340	4250	4120
						158B	44	10480	10310	10110	9930	9740	9650	9560	9360	9070
20.5-25 E-2	17	520 20.5	1492 58.7	658 25.9	4340 170.9	20	4	5600	5500	5400	5300	5200	5150	5100	5000	4850
						164B	58	12330	12110	11890	11670	11450	11340	11230	11010	10680
						12	2	5040	4950	4860	4770	4680	4640	4590	4500	4370
						160B	29	11100	10900	10700	10510	10310	10220	10110	9910	9630
						16	2.75	6100	6000	5890	5780	5670	5610	5560	5450	5290
						167B	40	13440	13220	12970	12730	12490	12360	12250	12000	11650
20	3.25	6720	6600	6480	6360	6240	6180	6120	6000	5820						
170B	47	14800	14540	14270	14010	13740	13610	13480	13220	12820						



TELEHANDLER



WHEEL LOADER



GRADER

307



Alliance 307 is a G-2/L-2 pattern developed for Grader-Loader applications. The design provides optimal traction and heat and cut resistance for all types of grader-loader application. The design feature also enables the tyre have excellent self cleaning characteristics and long life.



Traction

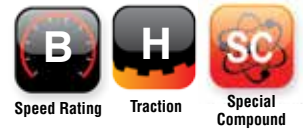
Size	Rim	Unloaded dimension		Loaded Static Radius	Rolling Circum	PR	Recommend load, kg (lbs)			
		SW	OD				(For Grader)		(For Loader/Dozer/TH)	
		mm in	mm in				Infl. press kpa/psi	40 Kmph Max.Load kgs / lbs	Infl. press kpa/psi	40 Kmph Max.Load kgs / lbs
13.00-24	8.00TG	330	1270	579	3728	12PR	300	2725	450	5600
		13	50	22.8	146.8		44	6000	65	12300
14.00-24	8.00TG	360	1338	607	3910	12PR	250	3075	425	6300
		14.2	52.7	23.9	153.9		36	6800	62	13900
15.5-25	12	390	1278	584	3763	12PR	250	2650	400	5600
		15.4	50.3	23	148.2		36	5840	58	12300
17.5-25	14	440	1347	597	3940	16PR	275	3350	475	7300
		17.3	53	23.5	155.1		40	7400	69	16100
20.5-25	17.00/2.5 X 25	518	1493	674	4445	16PR	225	4000	350	8250
		20.4	58.8	26.5	175		33	8800	51	18200

* = Under Development



308

Alliance 308 Special Loader Dozer tyre is a tyre designed for rugged service on front-end loaders. Husky tread bars are sized and angled for maximum traction and specially contoured to resist tearing and chipping. The overlapping lugs ensure smooth rolling on any type of surface and lug spacing provides self-cleaning properties. It is built from ozone and weather-resistant compounds and has a strong nylon construction.



308 LOADER DOZER

Size	Rim	Unloaded dimension		Loaded Static Radius	Rolling Circum	PR load index	Off-the road						Hard Improved Surfaces			
		SW	OD				Infl. press	Recommended load, kg (lbs)				Infl. press	Recommended load, kg (lbs)			
								Speed, km/h (mph)					Speed, km/h (mph)			
								bar psi	Static	5 3	10 6		25 16	bar psi	Static	5 3
15.5-25 L-2	12 12SDC	394 15.5	1277 50.3	564 22.2	3720 146.5	8	2.5	6800	4800	4250	3610	3	7650	6160	5740	5310
						158A2	36	14980	10570	9360	7950	44	16850	13570	12640	11700
						10	3.25	7800	5510	4875	4140	3.9	8780	7070	6580	6090
						163A2	47	17180	12140	10740	9120	57	19340	15570	14490	13410
						12	4	8960	6330	5600	4760	4.8	10080	8120	7560	7000
						168A2	58	19740	13940	12330	10480	70	22200	17890	16650	15420
17.5-25 L-2	14 14SDC	444 17.5	1348 53.1	599 23.6	3940 155.1	14	4.75	9840	6950	6150	5230	5.7	11070	8920	8300	7690
						171A2	69	21670	15310	13550	11520	83	24380	19650	18280	16940
						12	3.5	9840	6950	6150	5230	4.2	11070	8920	8300	7690
						171A2	51	21670	15310	13550	11520	61	24380	19650	18280	16940
						16	4.75	11680	8250	7300	6210	5.7	13140	10590	9860	9130
						177A2	69	25730	18170	16080	13680	83	28940	23330	21720	20110
20.5-25 L-2	17	520 20.5	1492 58.7	658 25.9	4340 170.9	20	5.75	13200	9320	8250	7010	6.9	14850	11960	11140	10310
						181A2	83	29070	20530	18170	15440	100	32710	26340	24540	22710
						12	2.5	10720	7570	6700	5700	3	12060	9720	9050	8380
						174A2	36	23610	16670	14760	12560	44	26560	21410	19930	18460
						16	3.5	13200	9320	8250	7010	4.2	14850	11960	11140	10310
						181A2	51	29070	20530	18170	15440	61	32710	26340	24540	22710
						20	4.5	15200	10740	9500	8080	5.4	17100	13780	12830	11880
						186A2	65	33480	23660	20930	17800	78	37670	30350	28260	26170

308 TRANSPORT & GRADER

Size	Rim	Unloaded dimension		Loaded Static Radius	Rolling Circum	PR Load Index	Infl. press	Recommend load, kg (lbs)								
		SW	OD					Speed, km/h (mph)								
		mm in	mm in					15 9	20 12	25 16	30 19	35 22	40 25	45 28	50 31	55 34
15.5-25 308 L2 G2	12 12SDC	394 15.5	1277 50.3	564 22.2	3720 146.5	8	1.75	2880	2830	2780	2730	2680	2650	2630	2575	2500
						141B	25	6340	6230	6120	6010	5900	5840	5790	5670	5510
						10	2.25	3360	3300	3240	3180	3120	3090	3060	3000	2910
						146B	33	7400	7270	7140	7000	6870	6810	6740	6610	6410
						12	2.5	3640	3580	3510	3450	3380	3350	3320	3250	3150
						149B	36	8020	7890	7730	7600	7440	7380	7310	7160	6940
						14	2.75	3980	3910	3830	3760	3690	3660	3620	3550	3440
						152B	40	8770	8610	8440	8280	8130	8060	7970	7820	7580
17.5-25 308 L2 G2	14 14SDC	444 17.5	1348 53.1	599 23.6	3940 155.1	12	2.25	4090	4020	3940	3870	3800	3760	3720	3650	3540
						153B	33	9010	8850	8680	8520	8370	8280	8190	8040	7800
						16	3	4760	4680	4590	4510	4420	4380	4340	4250	4120
						158B	44	10480	10310	10110	9930	9740	9650	9560	9360	9070
						20	4	5600	5500	5400	5300	5200	5150	5100	5000	4850
20.5-25 308 L2 G2	17	520 20.5	1492 58.7	658 25.9	4340 170.9	12	2	5040	4950	4860	4770	4680	4640	4590	4500	4370
						160B	29	11100	10900	10700	10510	10310	10220	10110	9910	9630
						16	2.75	6100	6000	5890	5780	5670	5610	5560	5450	5290
						167B	40	13440	13220	12970	12730	12490	12360	12250	12000	11650
						20	3.25	6720	6600	6480	6360	6240	6180	6120	6000	5820
170B	47	14800	14540	14270	14010	13740	13610	13480	13220	12820						

E-3/L-3/G-3



GRADER



DOZER



ARTICULATED
DUMP TRUCK



DUMP TRUCK



310

Alliance 310 pattern is constructed for heavy-duty jobs. The tough tread design ensures high mileage even on the most abrasive surfaces. This is a directional tyre built from weather and ozone-resistant compounds. Its nylon construction gives it long life.



Speed Rating



Special Compound

310 GRADER

Size	Rim	Unloaded dimension		Loaded Static Radius	Rolling Circum	PR Load Index	Infl. press	Recommend load, kg (lbs)								
		SW	OD					Speed, km/h (mph)								
		mm in	mm in					15 9	20 12	25 16	30 19	35 22	40 25	45 28	50 31	55 34
16.00-24TG G-3 TG	10.00VA	432 17	1493 58.8	685 27	4450 175.2	12	2.25	3980	3910	3830	3760	3690	3650	3580	3540	-
						153A8	33	8770	8610	8440	8280	8130	8040	7890	7800	-
						20	3.75	5610	5510	5410	5300	5200	5150	5050	5000	-
						165A8	54	12360	12140	11920	11670	11450	11340	11120	11010	-

310 DOZER

Size	Rim	Unloaded dimension		Loaded Static Radius	Rolling Circum	PR load index	Off-the road				Hard Improved Surfaces					
		SW	OD				Infl. press	Recommended load, kg (lbs)			Infl. press	Recommended load, kg (lbs)				
		mm in	mm in					mm in	mm in	bar psi		Static	5 3	10 6	25 16	bar psi
16.00-24 L-3	11.25	432 17	1493 58.8	685 27	4450 175.2	20	5.5	15600	11020	9750	8290	6.6	17550	14140	13160	12190
						187A2	80	34360	24270	21480	18260	96	38660	31150	28990	26850
						24	6.5	16960	11980	10600	9010	7.8	19080	15370	14310	13250
						190A2	94	37360	26390	23350	19850	113	42030	33850	31520	29190
16.00-25 L-3	11.25	432 17	1493 58.8	686 27	4460 175.6	28	7.5	18400	13000	11500	9780	9	20700	16680	15530	14380
						193A2	109	40530	28630	25330	21540	131	45590	36740	34210	31670
						32	8.75	20000	14130	12500	10630	10.5	22500	18130	16880	15630
						196A2	127	44050	31120	27530	23410	152	49560	39930	37180	34430

310 TRANSPORT / RDT

Size	Rim	Unloaded dimension		Loaded Static Radius	Rolling Circum	Load Index	Infl. press	Recommend load, kg (lbs)								
		SW	OD					Speed, km/h (mph)								
		mm in	mm in					mm in	mm in	mm in	mm in	mm in	mm in	mm in	mm in	mm in
16.00-25 E-3	11.25	432 17	1493 58.8	686 27	4460 175.6	28	5.75	7500	7370	7240	7100	6970	6900	6830	6700	6500
						174B	83	16520	16230	15950	15640	15350	15200	15040	14760	14320
						32	6.5	8180	8030	7880	7740	7590	7520	7450	7300	7080
						177B	94	18020	17690	17360	17050	16720	16560	16410	16080	15590

E-3/L-3



WHEEL LOADER

DOZER

ARTICULATED
DUMP TRUCK

DUMP TRUCK

GRADER



318 SUPER GRIP

Alliance 318 Super Grip Loader Dozer is a massive heavy-duty tyre that provides better gripping in construction, mining, logging and rock service jobs. It has an all-round centre tread belt which makes it a tough tyre. This tubeless tyre made of nylon construction has extra wide lugs providing superior traction and long mileage. It is a non-directional tyre built with a special compound that resists cuts, chipping and wear.



Speed Rating

Traction

Special
Compound

318 LOADER DOZER

Size	Rim	Unloaded dimension		Loaded Static Radius	Rolling Circum	PR load index Speed Sym	Off-the road					Hard Improved Surfaces										
		SW	OD				Infl. press	Recommended load, kg (lbs)				Infl. press	Recommended load, kg (lbs)									
								Speed, km/h (mph)					bar psi	Static	5 3	10 6	25 16	bar psi	Static	5 3	10 6	25 16
								mm in	mm in	mm in	mm in											
17.5-25 L-3	14 14SDC	444 17.5	1348 53.1	599 23.6	3940 155.1	12	3.5	9840	6950	6150	5230	4.2	11070	8920	8300	7690						
						171A2	51	21670	15310	13550	11520	61	24380	19650	18280	16940						
						16	4.75	11680	8250	7300	6210	5.7	13140	10590	9860	9130						
						177A2	69	25730	18170	16080	13680	83	28940	23330	21720	20110						
						20	5.75	13200	9320	8250	7010	6.9	14850	11960	11140	10310						
						181A2	83	29070	20530	18170	15440	100	32710	26340	24540	22710						
18.00-25 L-3	13	498 19.6	1617 63.7	726 28.6	4760 187.4	24	7	14800	10450	9250	7860	8.4	16650	13410	12490	11560						
						185A2	102	32600	23020	20370	17310	122	36670	29540	27510	25460						
						40	9.5	27200	19210	17000	14450	11.4	30600	24650	22950	21250						
						206A2	138	59910	42310	37440	31830	165	67400	54300	50550	46810						
20.5-25 L-3	17	520 20.5	1492 58.7	658 25.9	4340 170.9	12	2.5	10720	7570	6700	5700	3	12060	9720	9050	8380						
						174A2	36	23610	16670	14760	12560	44	26560	21410	19930	18460						
						16	3.5	13200	9320	8250	7010	4.2	14850	11960	11140	10310						
						181A2	51	29070	20530	18170	15440	61	32710	26340	24540	22710						
						20	4.5	15200	10740	9500	8080	5.4	17100	13780	12830	11880						
						186A2	65	33480	23660	20930	17800	78	37670	30350	28260	26170						
24	5.25	16480	11640	10300	8760	6.3	18540	14940	13910	12880												
189A2	76	36300	25640	22690	19300	91	40840	32910	30640	28370												

Size	Rim	Unloaded dimension		Loaded Static Radius	Rolling Circum	PR load index Speed Sym	Off-the road				Hard Improved Surfaces					
		SW	OD				Infl. press	Recommended load, kg (lbs)			Infl. press	Recommended load, kg (lbs)				
		mm in	mm in	mm in	mm in			bar psi	Speed, km/h (mph)			bar psi	Speed, km/h (mph)			
		mm in	mm in	mm in	mm in		Static		5 3	10 6	25 16		Static	5 3	10 6	25 16
23.5-25 L-3	19.5	597 23.5	1617 63.7	716 28.2	4720 185.8	12	2.25	12800	9040	8000	6800	2.7	14400	11600	10800	10000
						180A2	33	28190	19910	17620	14980	39	31720	25550	23790	22030
						16	3	15200	10740	9500	8080	3.6	17100	13780	12830	11880
						186A2	44	33480	23660	20930	17800	52	37670	30350	28260	26170
						20	3.75	17440	12320	10900	9270	4.5	19620	15810	14720	13630
						191A2	54	38410	27140	24010	20420	65	43220	34820	32420	30020
						28	5.5	21760	15370	13600	11560	6.6	24480	19720	18360	17000
						199A2	80	47930	33850	29960	25460	96	53920	43440	40440	37440
						26.5-25 L-3	22.00/3.0	673 26.5	1750 68.9	770 30.3	5080 200	20	3.5	21120	14920	13200
198A2	51	46520	32860	29070	24710							61	52330	42160	39250	36340
24	4	22400	15820	14000	11900							4.8	25200	20300	18900	17500
200A2	58	49340	34850	30840	26210							70	55510	44710	41630	38550
28	4.75	24800	17520	15500	13180							5.7	27900	22480	20930	19380
203A2	69	54630	38590	34140	29030							83	61450	49520	46100	42690
32	5.5	27200	19210	17000	14450							6.6	30600	24650	22950	21250
29.5-25 L-3	25.00/3.5	750 29.5	1873 73.7	819 32.2	5420 213.4	206A2	80	59910	42310	37440	31830	96	67400	54300	50550	46810
						22	3.25	24000	16950	15000	12750	3.9	27000	21750	20250	18750
						202A2	47	52860	37330	33040	28080	57	59470	47910	44600	41300
						32	5	30400	21470	19000	16150	6	34200	27550	25650	23750
						210A2	73	66960	47290	41850	35570	87	75330	60680	56500	52310

318 TRANSPORT & GRADER

Size	Rim	Unloaded dimension		Loaded Static Radius	Rolling Circum	PR Load Index	Infl. press	Recommend load, kg (lbs)									
		SW	OD					Speed, km/h (mph)									
		mm in	mm in					15 9	20 12	25 16	30 19	35 22	40 25	45 28	50 31	55 34	
17.5-25 E-3	14 14SDC	444 17.5	1348 53.1	599 23.6	3940 155.1	12	2.25	4090	4020	3940	3870	3800	3760	3720	3650	3540	
							153B	33	9010	8850	8680	8520	8370	8280	8190	8040	7800
							16	3	4760	4680	4590	4510	4420	4380	4340	4250	4120
							158B	44	10480	10310	10110	9930	9740	9650	9560	9360	9070
							20	4	5600	5500	5400	5300	5200	5150	5100	5000	4850
							164B	58	12330	12110	11890	11670	11450	11340	11230	11010	10680
							24	5	6500	6380	6260	6150	6030	5970	5920	5800	5630
							169B	73	14320	14050	13790	13550	13280	13150	13040	12780	12400
18.00-25 E-3	13	498 19.6	1617 63.7	726 28.6	4760 187.4	28	5	8960	8800	8640	8480	8320	8240	8160	8000	7760	
						180B	73	19740	19380	19030	18680	18330	18150	17970	17620	17090	
						40	7	10920	10730	10530	10340	10140	10040	9950	9750	9460	
						187B	102	24050	23630	23190	22780	22330	22110	21920	21480	20840	
20.5-25 E-3	17	520 20.5	1492 58.7	658 25.9	4340 170.9	12	2	5040	4950	4860	4770	4680	4640	4590	4500	4500	
						160B	29	11100	10900	10700	10510	10310	10220	10110	9910	9630	
						16	2.75	6100	6000	5890	5780	5670	5610	5560	5450	5290	
						167B	40	13440	13220	12970	12730	12490	12360	12250	12000	11650	
						20	3.25	6720	6600	6480	6360	6240	6180	6120	6000	5820	
						170B	47	14800	14540	14270	14010	13740	13610	13480	13220	12820	
						24	4	7500	7370	7240	7100	6970	6900	6830	6700	6500	
						174B	58	16520	16230	15950	15640	15350	15200	15040	14760	14320	
23.5-25 E-3	19.5	597 23.5	1617	716 28.2	4720 185.8	16	2.25	6890	6770	6640	6520	6400	6330	6270	6150	5970	
						171B	33	15180	14910	14630	14360	14100	13940	13810	13550	13150	
						20	3	8180	8030	7880	7740	7590	7520	7450	7300	7080	
						177B	44	18020	17690	17360	17050	16720	16560	16410	16080	15590	
						28	4	9800	9630	9450	9280	9100	9010	8930	8750	8490	
						183B	58	21590	21210	20810	20440	20040	19850	19670	19270	18700	
26.5-25 E-3	22.00/3.0	673 26.5	1750 68.9	770 30.3	5080 200	20	2.5	9240	9080	8910	8750	8580	8500	8420	8250	8000	
						181B	36	20350	20000	19630	19270	18900	18720	18550	18170	17620	
						24	3	10360	10180	9990	9810	9620	9530	9440	9250	8970	
						185B	44	22820	22420	22000	21610	21190	20990	20790	20370	19760	
						28	3.5	11200	11000	10800	10600	10400	10300	10200	10000	9700	
						188B	51	24670	24230	23790	23350	22910	22690	22470	22030	21370	
						32	4.25	12540	12320	12100	11870	11650	11540	11420	11200	10860	
						192B	62	27620	27140	26650	26150	25660	25420	25150	24670	23920	
29.5-25 E-3	25.00/3.5	750 29.5	1873 73.7	819 32.2	5420 213.4	22	2.5	11200	11000	10800	10600	10400	10300	10200	10000	9700	
						185B	36	24670	24230	23790	23350	22910	22690	22470	22030	21370	
						32	3.75	14370	14090	13810	13540	13270	13010	12750	12500	12130	
						196B	54	31650	31040	30420	29820	29230	28660	28080	27530	26720	

E-2/L-2/G-2



WHEEL LOADER



DOZER



ARTICULATED
DUMP TRUCK



326 WIDE GRIP

Alliance 326 Wide Grip Loader Dozer tyre is a wide base tubeless tyre. It is designed with superior self-cleaning properties, provides high traction and high flotation in all off road applications. Its heavy-duty nylon construction and weather & ozone-resistant rubber compounds ensure longer tyre life in all types of service.

326 LOADER DOZER



Size	Rim	Unloaded dimension		Loaded Static Radius	Rolling Circum	PR load index Speed Sym	Off-the road					Hard Improved Surfaces				
		SW mm in	OD mm in				Infl. press bar psi	Recommended load, kg (lbs)				Infl. press bar psi	Recommended load, kg (lbs)			
								Speed, km/h (mph)					Speed, km/h (mph)			
								Static	5 3	10 6	25 16		Static	5 3	10 6	25 16
16/70-20EM (405/70-20) EM L-2	13DC max.10PR 13SDC 14PR 13SDC	407 16	1076 42.4	475 18.7	3130 123.2	10	3.25	6600	4660	4125	3510	3.9	7430	5980	5570	5160
						157A2	47	14540	10260	9090	7730	57	16370	13170	12270	11370
						14	4.5	8480	5990	5300	4510	5.4	9540	7690	7160	6630
						166A2	65	18680	13190	11670	9930	78	21010	16940	15770	14600
16/70-24EM (405/70-24) EM L-2	13.00 DC	407 16	1178 46.4	577 22.7	3660 144.1	10	3.25	7600	5370	4750	4040	3.9	8550	6890	6410	5940
						162A2	47	16740	11830	10460	8900	57	18830	15180	14120	13080
						14	4.5	9280	6550	5800	4930	5.4	10440	8410	7830	7250
						169A2	65	20440	14430	12780	10860	78	23000	18520	17250	15970
22/70-24 (20-24EM) EM L-2	16.00 T SDC	545 21.5	1390 54.7	612 24.1	4040 159.1	12	3	10400	7350	6500	5530	3.6	11700	9430	8780	8130
						173A2	44	22910	16190	14320	12180	52	25770	20770	19340	17910
						14	3.5	11360	8020	7100	6040	4.2	12780	10300	9590	8880
						176A2	51	25020	17670	15640	13300	61	28150	22690	21120	19560

326 TRANSPORT

Size	Rim	Unloaded dimension		Loaded Static Radius	Rolling Circum	PR load index Speed Symbi	Infl. press bar psi	Recommended load, kg (lbs)									
		SW	OD					Speed, km/h (mph)									
		mm in	mm in	mm in	mm in			15 9	20 12	25 16	30 19	40 25	50 31	55 34	60 37	65 40	
16/70-20EM (405/70-20) EM E-2	13DC max.10PR 13SDC 14PR 13SDC	407 16	1076 42.4	475 18.7	3130 123.2	10	2.5	2880	2830	2780	2730	2650	2575	2500	2370	2120	
						141B	36	6340	6230	6120	6010	5840	5670	5510	5220	4670	
						134D											
						14	3.5	3640	3580	3510	3450	3350	3250	3150	2990	2725	
						149B	51	8020	7890	7730	7600	7380	7160	6940	6590	6000	
						143D											
16/70-24EM (405/70-24) EM E-2	13.00 SDC 13DC	407 16	1178 46.4	577 22.7	3660 144.1	10	2.5	3050	3000	2940	2890	2810	2725	2640	2510	2300	
						143B	36	6720	6610	6480	6370	6190	6000	5810	5530	5070	
						137D											
						14	3.5	3980	3910	3830	3760	3660	3550	3440	3270	2900	
						152B	51	8770	8610	8440	8280	8060	7820	7580	7200	6390	
						145D											
20-24EM 22/70-24 EM E-2	16.00 T SDC	545 21.5	1390 54.7	612 24.1	4040 159.1	12	2.5	4760	4680	4590	4510	4380	4250	4120	3910	3550	
						158B	36	10480	10310	10110	9930	9650	9360	9070	8610	7820	
						152D											
						14	3	5460	5360	5270	5170	5020	4875	4730	4490	4000	
						163B	44	12030	11810	11610	11390	11060	10740	10420	9890	8810	
						156D											

PORT



E-3



CONTAINER
HANDLER



INDUSTRIAL
FORK LIFT



PORTSTAR 309

Alliance Portstar 309 tyre is designed especially for heavy duty forklift trucks and container handlers operating on hard improved surfaces. Its unique tread design and special rubber compound provides long tread life. The heavy duty nylon construction protects the sidewalls against damage and ensures long tyre life.



Speed Rating



Special
Compound

Size	Rim	Unloaded dimension		Loaded Static Radius	Rolling Circum	PR	Load Index	Infl. press	Load Capacity for Industrial (Harbour) applications				
		SW	OD						25 kmph	10 kmph	5 kmph	1 kmph	Static
		mm in	mm in						mm in	mm in	mm in	mm in	mm in
14.00-24	10	375	1368	630	4100	28	196A5	10	12500	13500	14500	16000	18000
		14.8	53.9	24.8	161.4				145	27560	29760	31965	35275



PORT STAR PLUS 315

The Alliance 315 Port Service tyre is designed for port applications and is engineered with extra deep tread which is the highest in the segment. The deep tread ensures long tyre life which results in superior performance. The robust nylon casing and high number of plies ensures high lateral stability and high load carrying capacity. The high ground contact area ensures that the pressure on ground is much lesser than maximum permissible pressure thus resulting in long tyre life and uniform wear. A strong bead bundle of the tyre results in minimizing bead failure. The specially formulated tread compound and higher insulation between the plies aids in lesser heat generation thus extending the life of the tyre.



Size	Rim	Unloaded dimension		Static Loaded Radius	Rolling Circum	NSD	PR	Load Capacity for Industrial (Harbour) applications					
		SW	OD					Infl. Pressure	static	1 kmph	5 kmph	10 kmph	25 kmph
		mm in	mm in						Max Load Capacity kgs/(lbs)	Max Load Capacity kgs/(lbs)	Max Load Capacity kgs/(lbs)	Max Load Capacity kgs/(lbs)	Max Load Capacity kgs/(lbs)
18.00-25 E 4.5	13	505 19.9	1673 65.9	762 30	4952 195	65.7 2.6	40	10 145	30600 67460	27200 59965	24650 54345	22950 50595	21250 46845

E-3



318 SUPER GRIP

Alliance 318 Super Grip is designed for port use (paved surface). This tyre is designed especially for heavy duty forklift trucks and container handlers operating on hard improved surfaces. High land to void ratio and larger tread width provides very high ground contact area for good traction on paved surface.



Size	Rim	Unloaded dimension		Loaded Static Radius	Rolling Circum	PR	Load Index	Infl. press	Load Capacity for Industrial (Harbour) applications				
		SW	OD						25 kmph	10 kmph	5 kmph	1 kmph	Static
		mm in	mm in						Max Load Capacity	Max Load Capacity	Max Load Capacity	Max Load Capacity	Max Load Capacity
									Speed	bar	kgs / lbs	kgs / lbs	kgs / lbs
				mm in	mm in		psi						
18.00-25	13	498	1617	726	4760	40	-	10	21250	22950	24650	27200	30600
E-3		19.6	63.7	28.6	187.4		-	145	46845	50595	54345	59965	67460



505

Alliance 505 is a specially designed tyre for terminal tractor operations in ports and terminals. The tyre has deep treads that provide long service life and is suitable for operating on all wheel positions, drive and steering axle. Unique tread design and special rubber compound ensure low wear rate. An all-steel construction gives excellent casing durability and protects tyre from external damages, while allowing high speeds with high loads.



Size	Rim	Unloaded dimension		Loaded Static Radius	Rolling Circum	NSD Tread Depth	Load Index Speed Symb.	Speed	For all axles									
		SW	OD						Inflation Pressure bar (psi)									
		mm in	mm in						6	6.5	7	7.5	8	8.5	9	9.5	10	
280/75R22.5	7.5	275	996	451	3043	31	172A5	25	4230	4500	4770	5030	5290	5550	5800	6050	6300	
	8.25	10.8	39	17.8	119.8	39.1	168A8	16	9320	9910	10510	11080	11650	12220	12780	13330	13880	
								40	3770	4010	4250	4480	4710	4940	5160	5380	5600	
								25	8300	8830	9360	9870	10370	10880	11370	11850	12330	

IND-4



CONTAINER HANDLER



INDUSTRIAL FORK LIFT



609

609 is a radial construction tyre that allows the sidewall and the tread to function as two independent features of the tyre. The sidewall flex is not transmitted to the tread ensuring the footprint only lengthens with minimal transversal slip. The increased flexibility and strength helps in absorbing shocks. Reinforced tread and sidewalls combined with casing specially designed for port applications provide effective protection against damage and abrasion. It also results in low operational costs and improved productivity.



SIZE	P.R.	TYPE	RIM	O.D.	S.W.	SLR	L.C.C.	A.P.	SP
				mm in	mm in	mm in	kgs lbs	bar psi	kmph mph
16.00R25*	**	TL	11.25/2.0	1525	434	684	15000	10	25
				60	17.1	26.9	33069	145	16



610

IND-4



REACH STACKER

Alliance 610 is highly versatile and modern design tyre. It has Strong Casing due to reinforced tread and Sidewalls combined with casing specially designed for port applications. The 610 gives effective protection against damage and abrasion. Alliance 610 has lower operational cost and improved machines productivity. Radial construction allows the sidewall and the tread to function as two independent features of the tyre; sidewall flex does not transmit to the tread ensuring the footprint only lengthens with minimal transversal slip and increases flexibility and strength helping in absorbing shocks etc



Size	Rim	Unloaded dimension		Loaded Static Radius	Rolling Circum	NSD Tread Depth	Load Index Speed Symb.	Speed	For all axles								
		SW	OD						Inflation Pressure bar (psi)								
		mm in	mm in						6	6.5	7	7.5	8	8.5	9	9.5	10
18.00R25*								km/h mph	87	94	102	109	116	123	131	138	145

18.00R25*

214A5

UNDERGROUND MINING AND SEVERE SERVICES





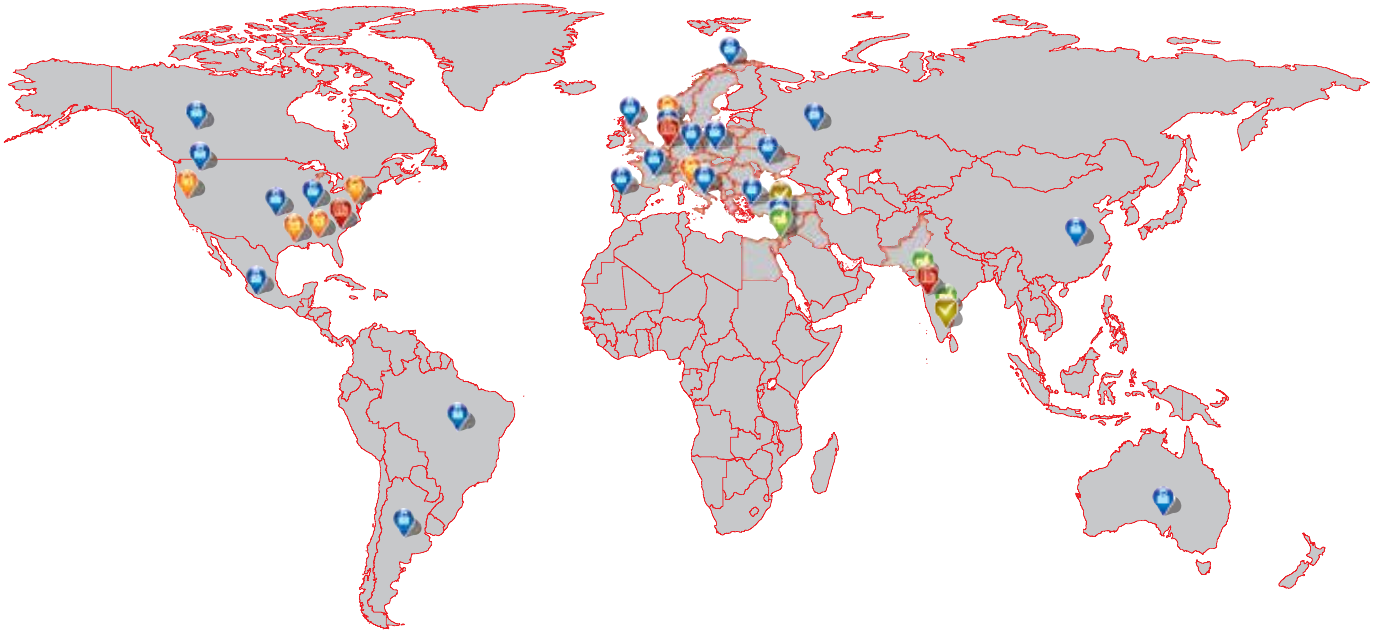
314 MINE SERVICE






The Alliance 314 Mine Service tyre is designed for the most demanding underground mining applications. It has extra, ultra deep treads to ensure long wear in highly abrasive surfaces. The robust nylon carcass with higher number of actual plies enhances tyre strength, penetration protection and load carrying capacity. Its specially formulated tread compound gives superior protection and exceptional tread life. The extra wide reinforced bead with superior compound reduces bead failure during high load operations. The tyre's wide and flat tread profile resulting in large ground contact area provides high traction and enhanced load carrying capacity.



Size	Rim	Unloaded Dimension		Static Loaded Radius	Rolling Circum	PR	Load Capacity for Underground Mining applications					
		SW	OD				Infl. Pressure	25 kmph	10 kmph	5 kmph	1 kmph	Static
								Max Load Capacity	Max Load Capacity	Max Load Capacity	Max Load Capacity	Max Load Capacity
		mm in	mm in				mm in	mm in	bar psi	kgs lbs	kgs lbs	kgs lbs
12.00-24	8.5	310	1270	590	3750	20	8.25	5865	6900	7800	8970	11040
		12.2	50	23.2	147.6		120	12930	15210	17190	19775	24340

GLOBAL REACH



-  Regional Offices
-  R & D Centers
-  Manufacturing Units
-  Warehouses
-  Sales and Technical Representatives

OFFICES:

Alliance Tire Europe BV

De Entree 59  1101 BH Amsterdam Zuidoost - The Netherlands
TEL: +31 (0)20 2184 770 • FAX: +31 (0)20 2184 771

Alliance Tire Company Ltd.

PO BOX No. 48,
Hadera, 38100 Israel.
TEL : 972 4 6240520
FAX : 972 4 6240555

ATC Tires India Pvt. Ltd.

Plot No. 53 & 27-C, 2nd Floor,
Empire Complex, Senapati Bapat Marg,
Lower Parel, Mumbai - 400013
TEL: +91 22 3957 9600
FAX: +91 22 39579699

Alliance Tire Americas Inc.

201 Edgewater Drive, Suite 285
Wakefield, MA 01880
TEL : 781-321-3910
Toll Free : 800-343-3276
FAX : 781-322-2147

Contact : info.europe@atgtire.com

Regional Offices & Representatives

Argentina • Australia • Brazil • Canada • China • France • Germany • Iberia • India • Israel • Italy • Poland • Russia • Scandinavia • The Netherlands • Turkey • Ukraine • UK • USA

Distributor:

Disclaimer: Tyre specifications mentioned in this document are subject to change with no prior intimation or notice. Please visit www.atgtire.com for updated information and details.